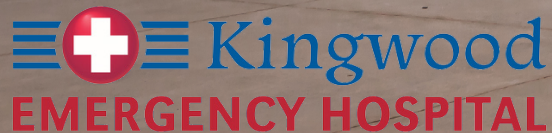


CLASS A MEDICAL OFFICE SPACE FOR LEASE



KINGWOOD EMERGENCY HOSPITAL

23330 US-59 | KINGWOOD, TEXAS 77339



ELISE PANTAZIS
713.231.1580
elise.pantazis@transwestern.com

SARAH CARTER
713.231.1629
sarah.carter@transwestern.com

CONTACT
LISA BOVERMANN
713.270.0457
lisa.bovermann@transwestern.com

CLASS A MEDICAL OFFICE SPACE FOR LEASE

KINGWOOD EMERGENCY HOSPITAL

23330 US-59 | KINGWOOD, TEXAS 77339

TRANSWESTERN REAL ESTATE SERVICES

1900 West Loop S
Suite 1300
Houston, TX 77027
713.270.7700
transwestern.com



ABOUT THE PROPERTY

Kingwood Emergency Hospital is a fully-licensed hospital that emphasizes high-quality, boutique-style healthcare. 24 hours per day, 7 days per week, KEH offers a clean, no-wait, full-service emergency department staffed by board-certified emergency physicians, highly experienced emergency nurses and techs. The facility also offers personalized inpatient acute medical care in our private, amenity-filled rooms. In addition, KEH offers on-site radiology (CT, x-ray, ultrasound, echocardiology, etc.) and laboratory services.

BUILDING SPECS

- 3-Story Class A Hospital
- 59,434 Gross Square Feet
- Ample Surface Parking
- Generous TI's

AVAILABILITIES

- **2,000 - 20,000 SF AVAILABLE**
- Second Floor Shell: 20,000 SF
- Call for Rates

SCAN TO VIEW



PROPERTY VIDEO



CONTACT

LISA BOVERMANN

713.270.0457

lisa.bovermann@transwestern.com

SARAH CARTER

713.231.1629

sarah.carter@transwestern.com

ELISE PANTAZIS

713.231.1580

elise.pantazis@transwestern.com

The information provided herein was obtained from sources believed reliable; however, Transwestern makes no guarantees, warranties or representations as to the completeness or accuracy thereof. The presentation of this property is submitted subject to errors, omissions, change of price or conditions, prior sale or lease, or withdrawal without notice.
Copyright © 2019 Transwestern.

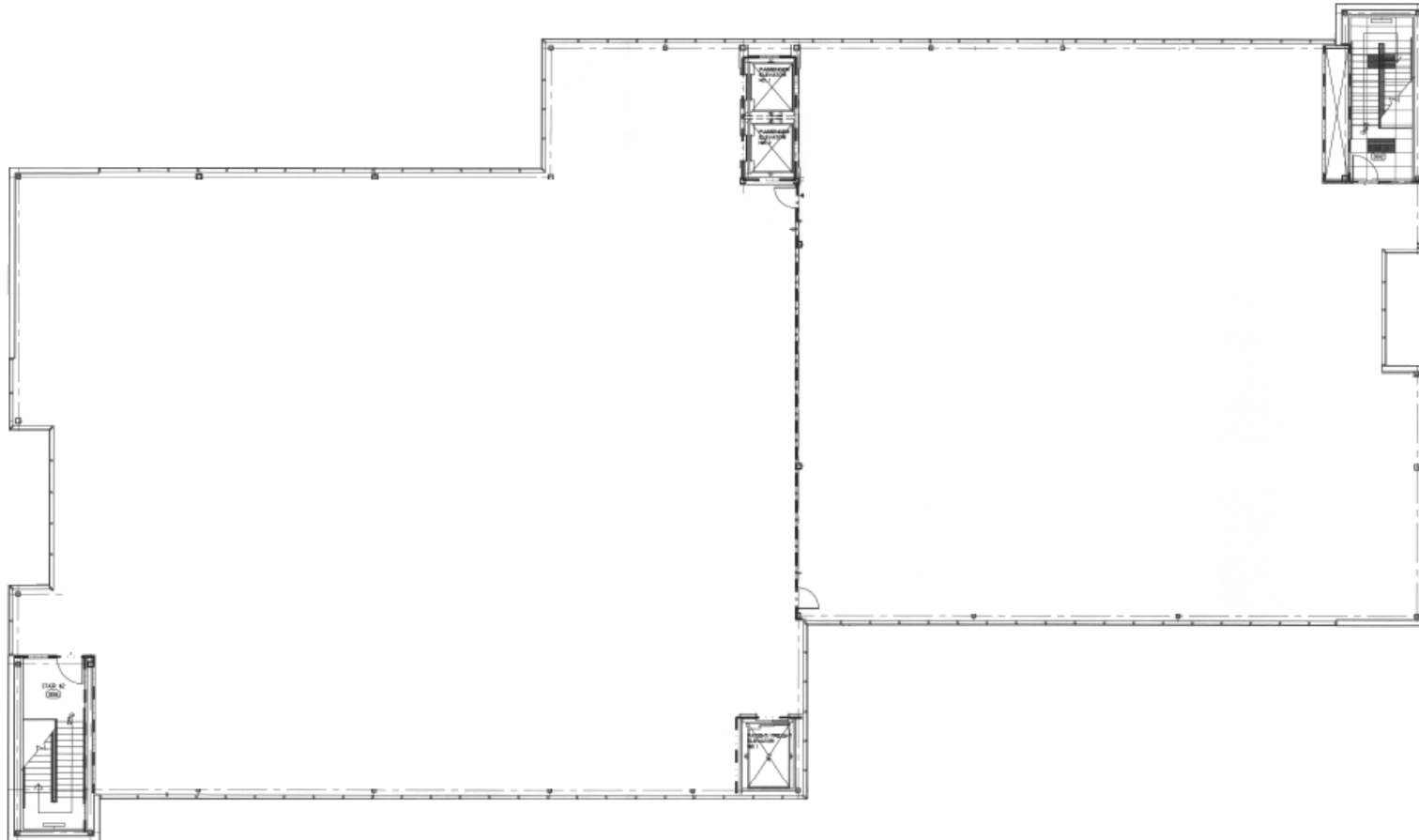
CLASS A MEDICAL OFFICE SPACE FOR LEASE

KINGWOOD EMERGENCY HOSPITAL

23330 US-59 | KINGWOOD, TEXAS 77339

FLOOR PLAN

SECOND FLOOR: 20,000 SF



ELISE PANTAZIS

713.231.1580

elise.pantazis@transwestern.com

SARAH CARTER

713.231.1629

sarah.carter@transwestern.com

CONTACT

LISA BOVERMANN

713.270.0457

lisa.bovermann@transwestern.com

 **TRANSWESTERN** REAL ESTATE SERVICES

The information provided herein was obtained from sources believed reliable; however, Transwestern makes no guarantees, warranties or representations as to the completeness or accuracy thereof. The presentation of this property is submitted subject to errors, omissions, change of price or conditions, prior sale or lease, or withdrawal without notice. Copyright © 2019 Transwestern.